



# GMT MONTHLY MEMBERSHIP PROGRESS REPORT

Results as of: 7/31/2024

Multiple District 320

LOCATION: INDIA

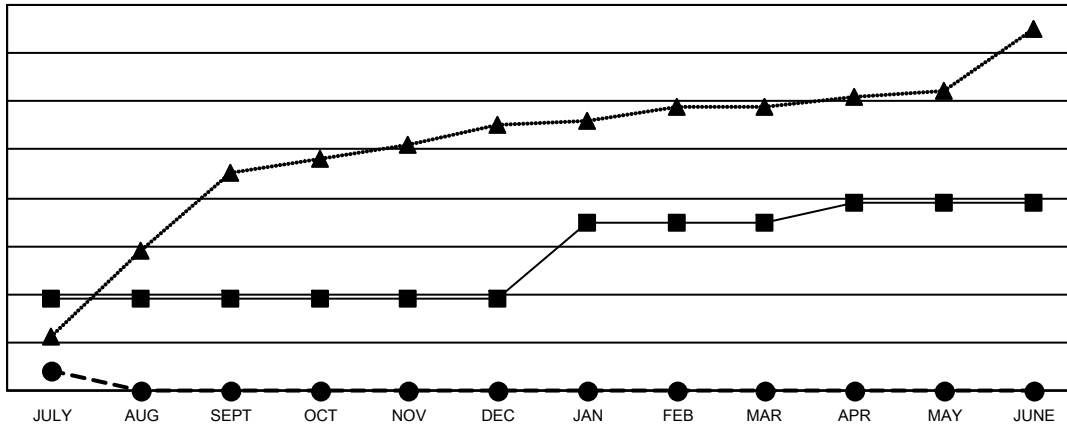
GMT: OPEN

GMT CA 6 - I

Clubs			
RESULTS FOR 2024-2025			
QUARTER	NEW CLUB GOAL	NEW CLUBS	DROPPED CLUBS
JULY/AUG/SEPT	19	4	0
OCT/NOV/DEC	0	0	0
JAN/FEB/MAR	16	0	0
APR/MAY/JUNE	4	0	0

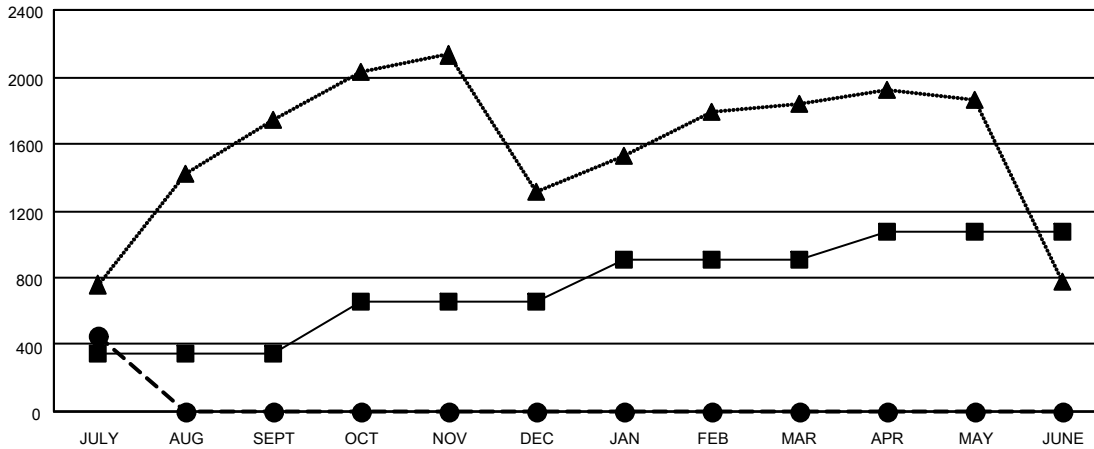
Members			
RESULTS FOR 2024-2025			
QUARTER	MEMBER GROWTH NET GOAL	MEMBER GROWTH ACTUAL	DROPPED MEMBERS ACTUAL (including transfers)
JULY/AUG/SEPT	345	631	144
OCT/NOV/DEC	310	0	0
JAN/FEB/MAR	250	0	0
APR/MAY/JUNE	165	0	0

GOALS AND ACTUAL NEW CLUBS CUMULATIVE



- - CURRENT YEAR GOALS FOR NEW CLUBS
- - CURRENT YEAR ACTUAL NEW CLUBS
- ▲ - LAST YEAR ACTUAL NEW CLUBS

GOALS AND ACTUAL MEMBERS CUMULATIVE



- - MEMBER GROWTH NET GOAL
- - MEMBER GROWTH ACTUAL
- ▲ - LAST YEAR MEMBERSHIP ACTUAL

DROPPED CLUBS: 0	
<b>DROPPED MEMBERS</b>	
DECEASED	6
CLUB CANCELLED	0
OTHER	135
<b>TOTAL</b>	<b>141</b>

114 CLUBS OF 674 ADDED 1 OR MORE NEW MEMBERS

GENDER DISTRIBUTION	
MALE	17,481 (73.15%)
FEMALE	6,415 (26.85%)

[CLICK HERE FOR CUMULATIVE MEMBERSHIP DATA](#)

TOTAL FAMILY UNIT MEMBERS	7,813
FAMILY MEMBERS PAYING HALF DUES	4,427